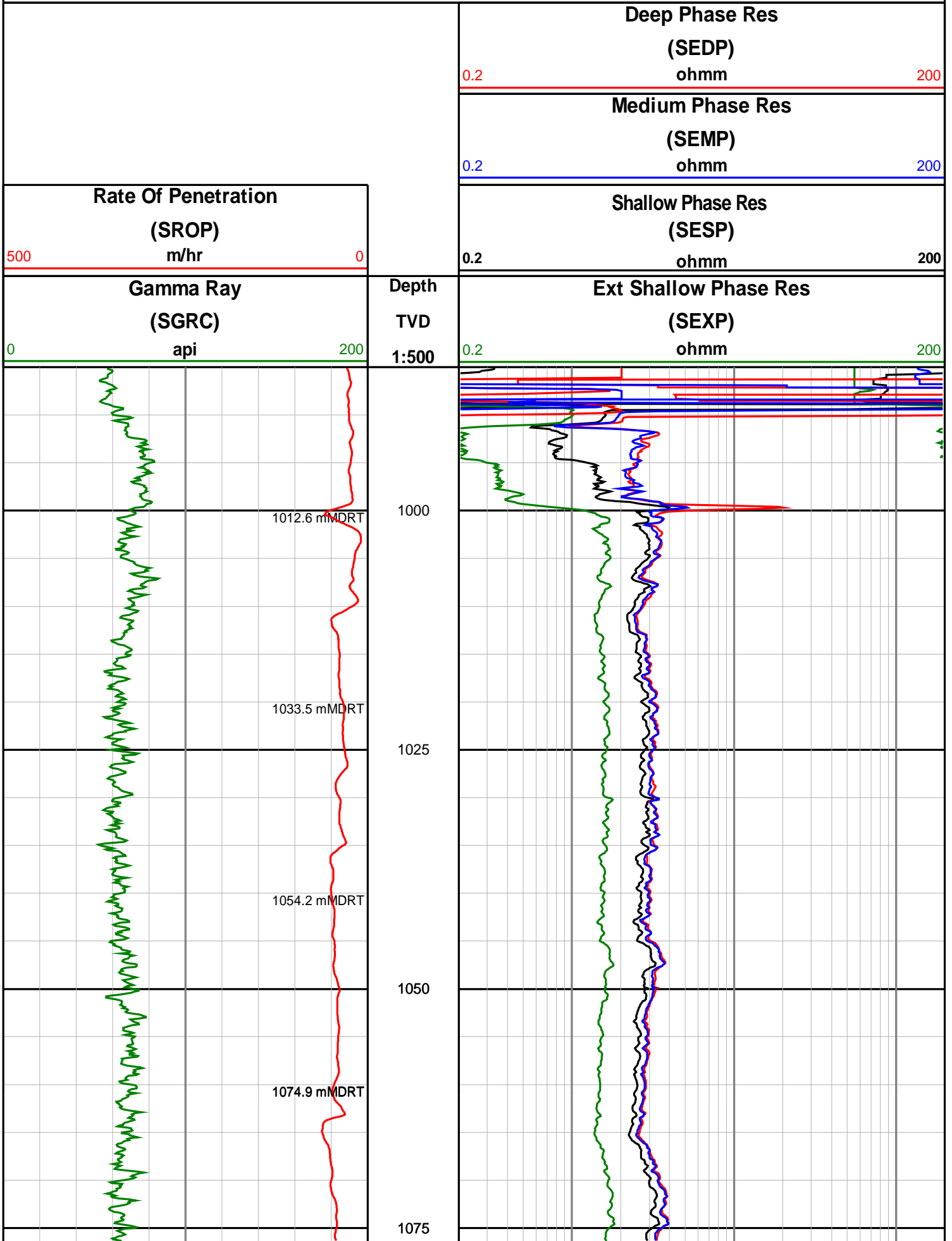
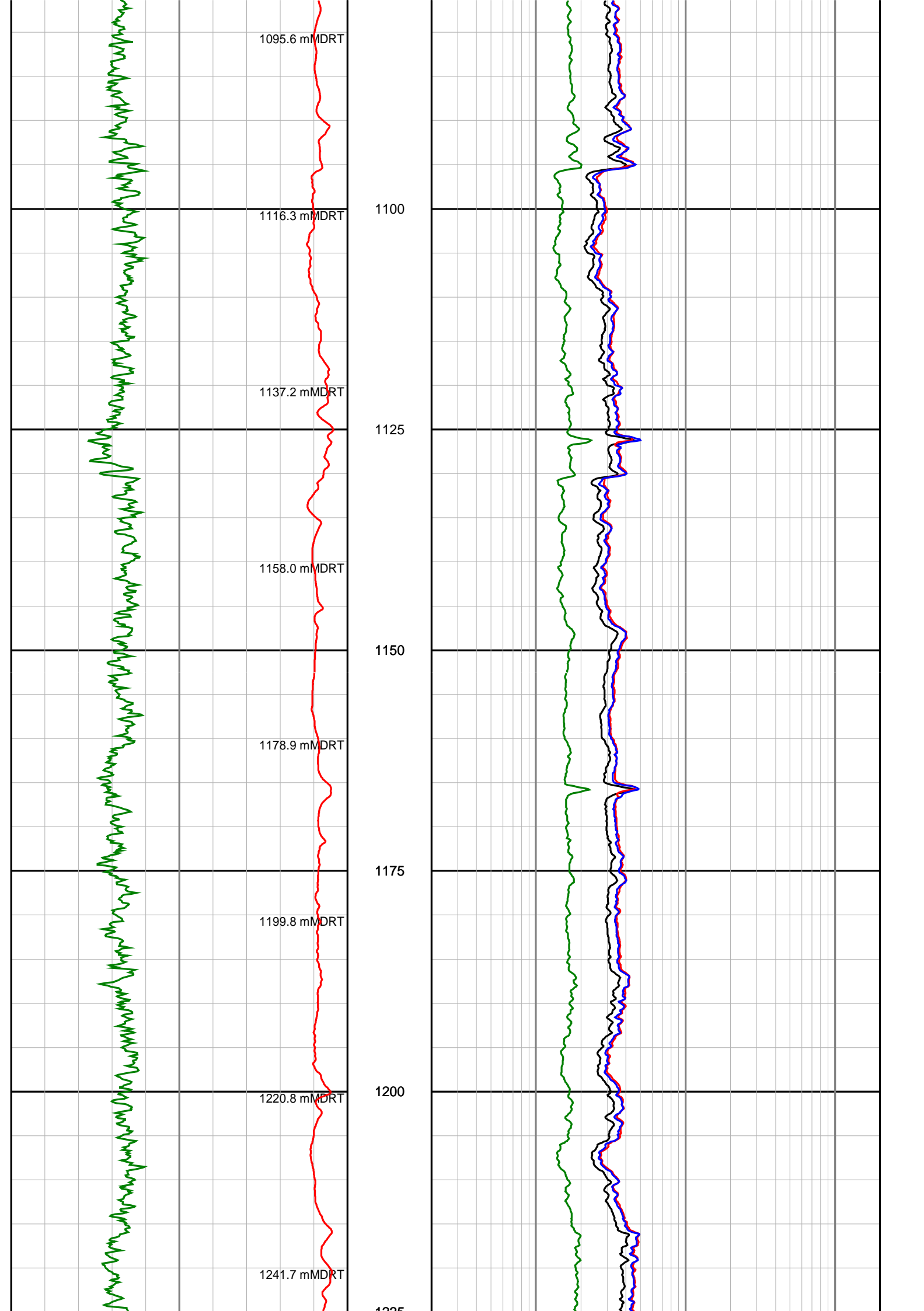


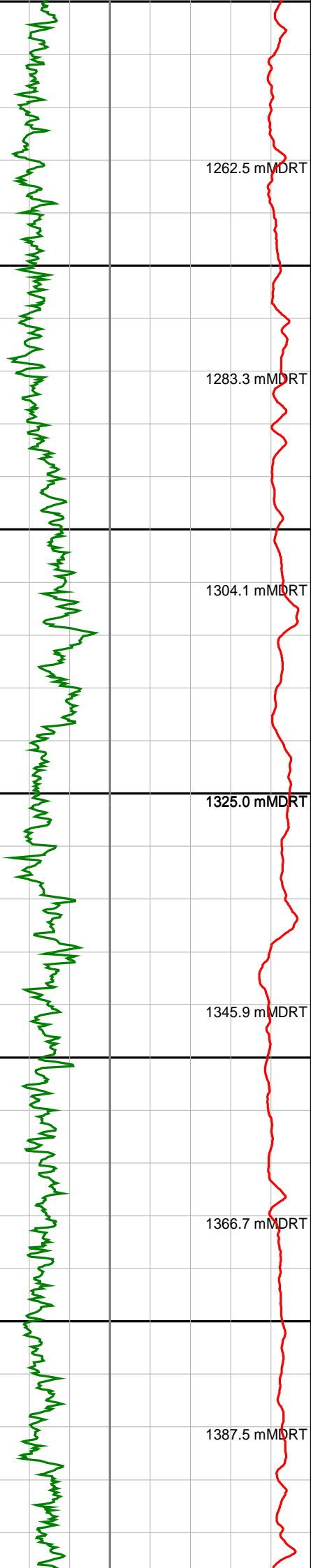
Anzon Australia Ltd

Basker-5

Realtime/Recorded LWD Log (Permanent Datum - LAT)







1387.5 mMDRT

1225

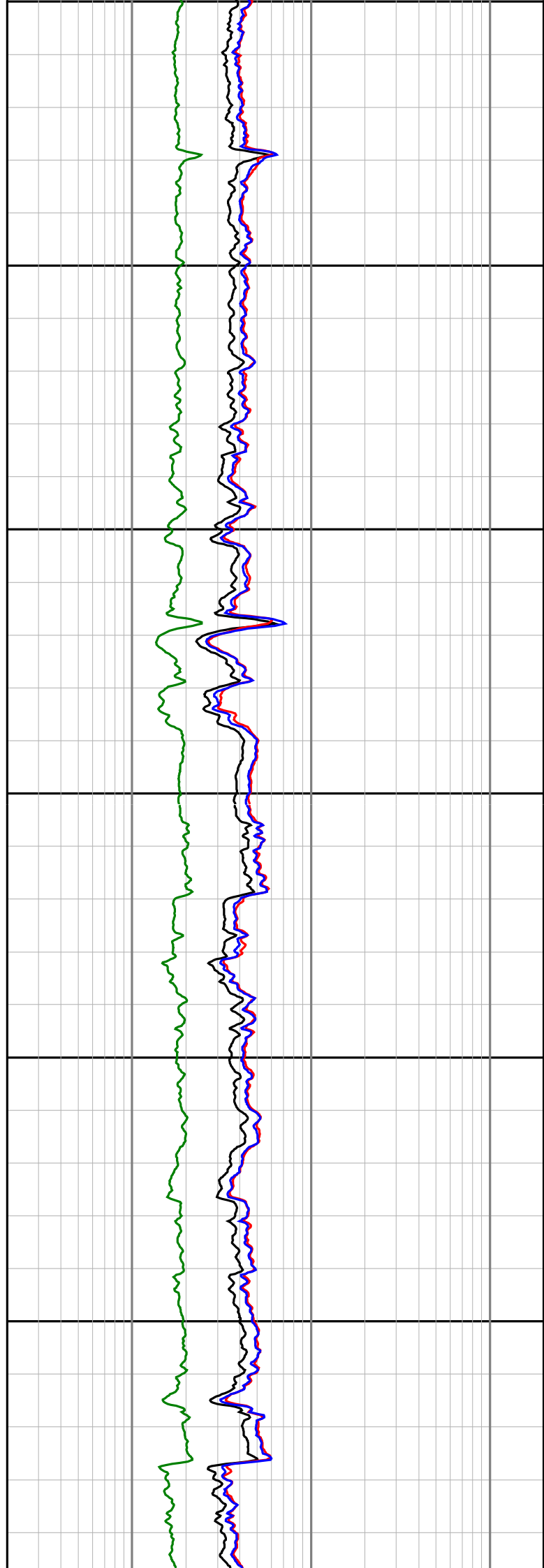
1250

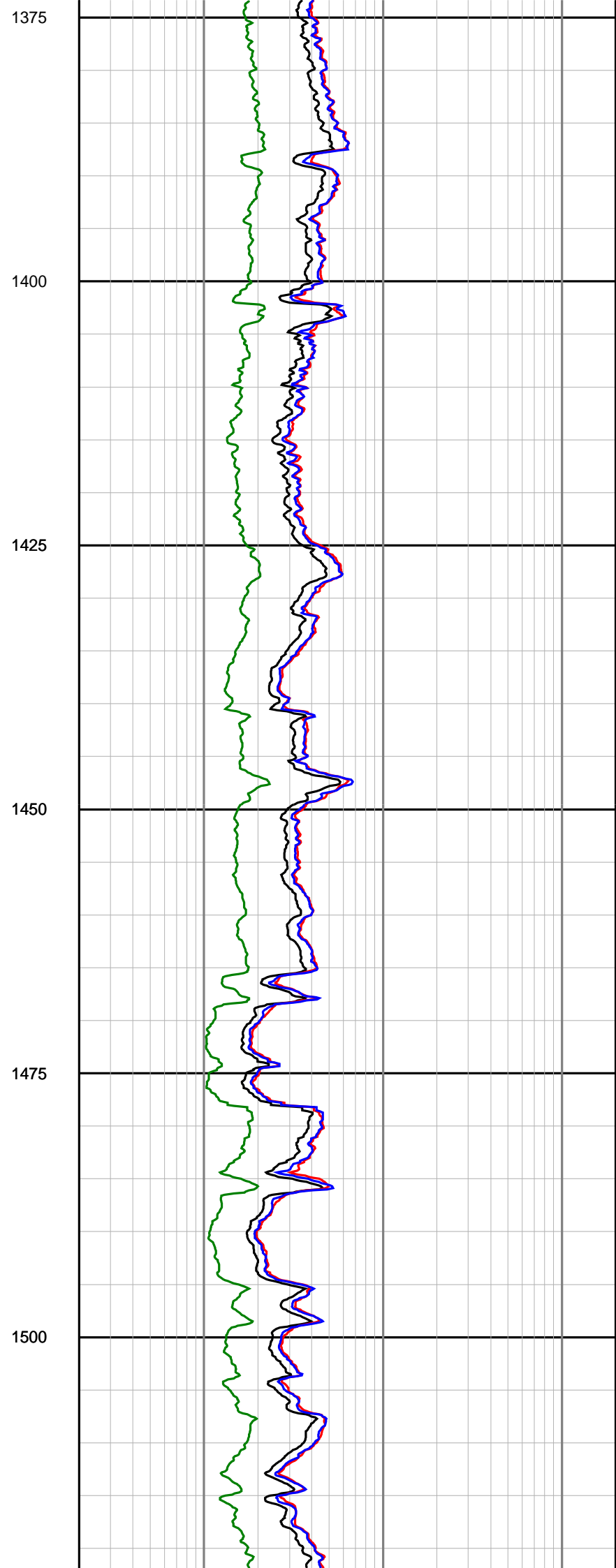
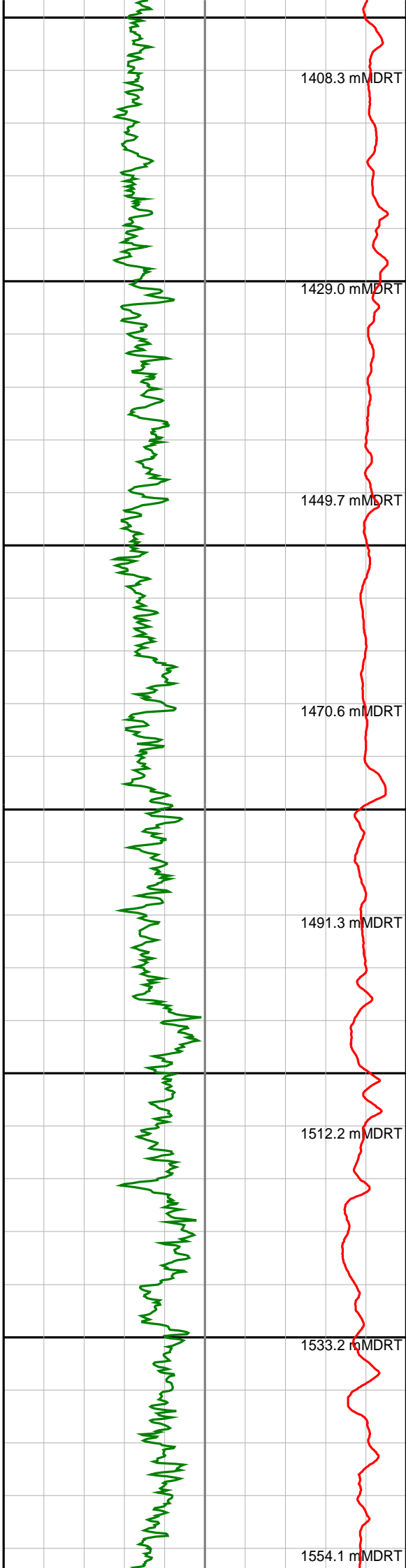
1275

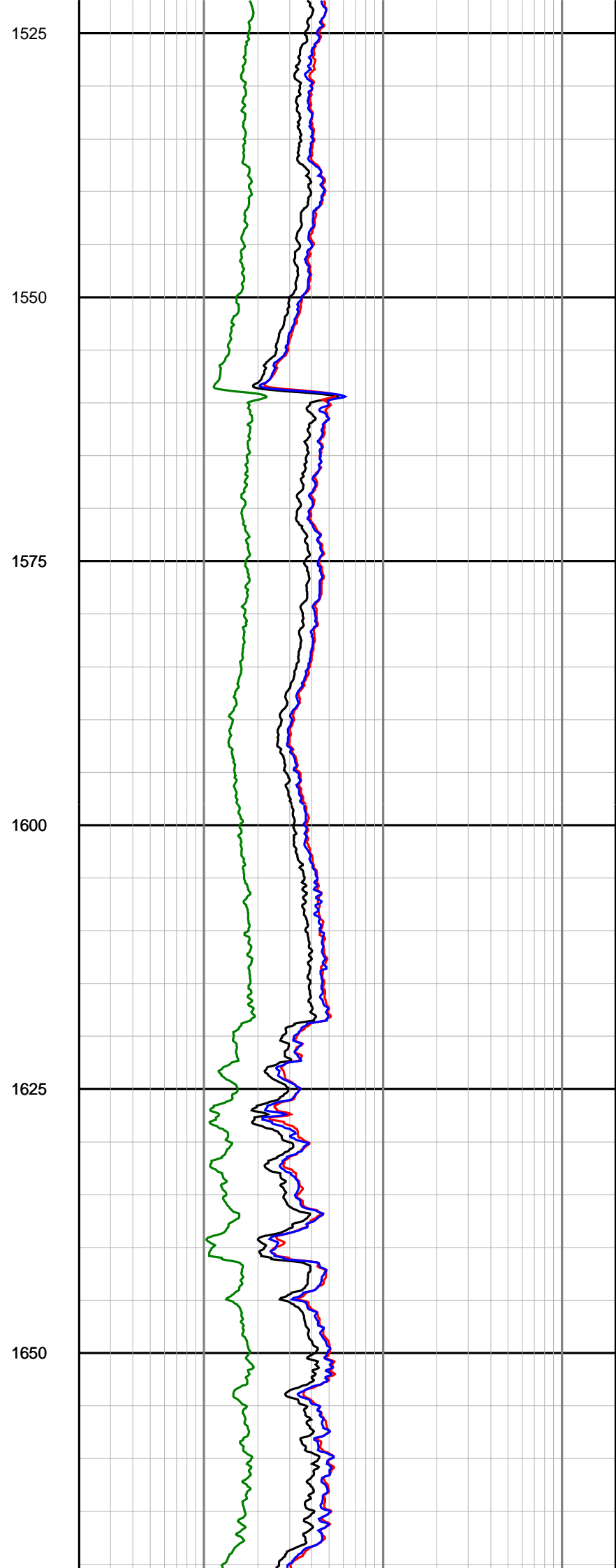
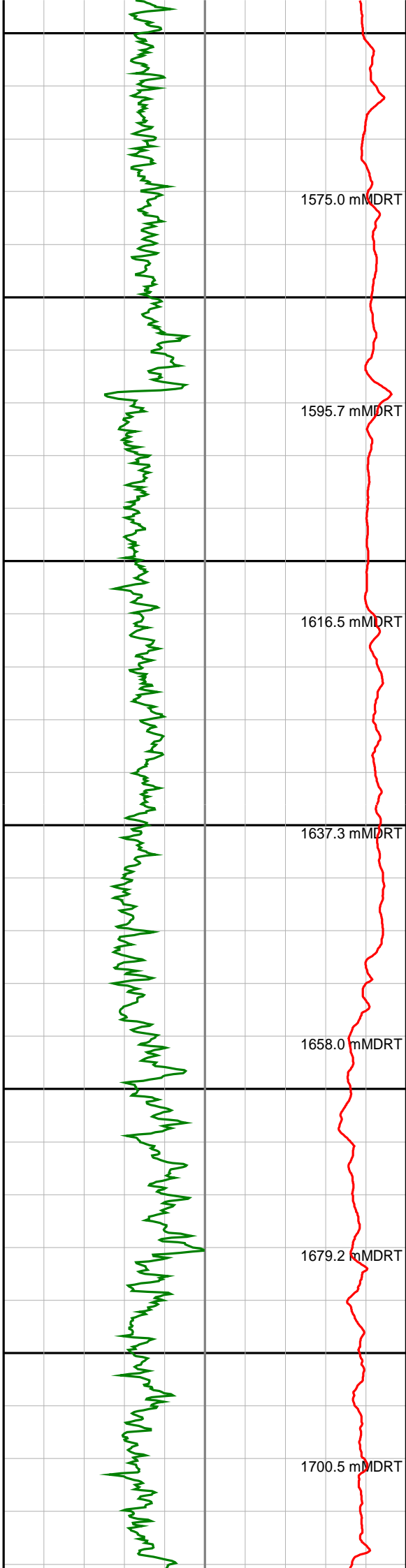
1300

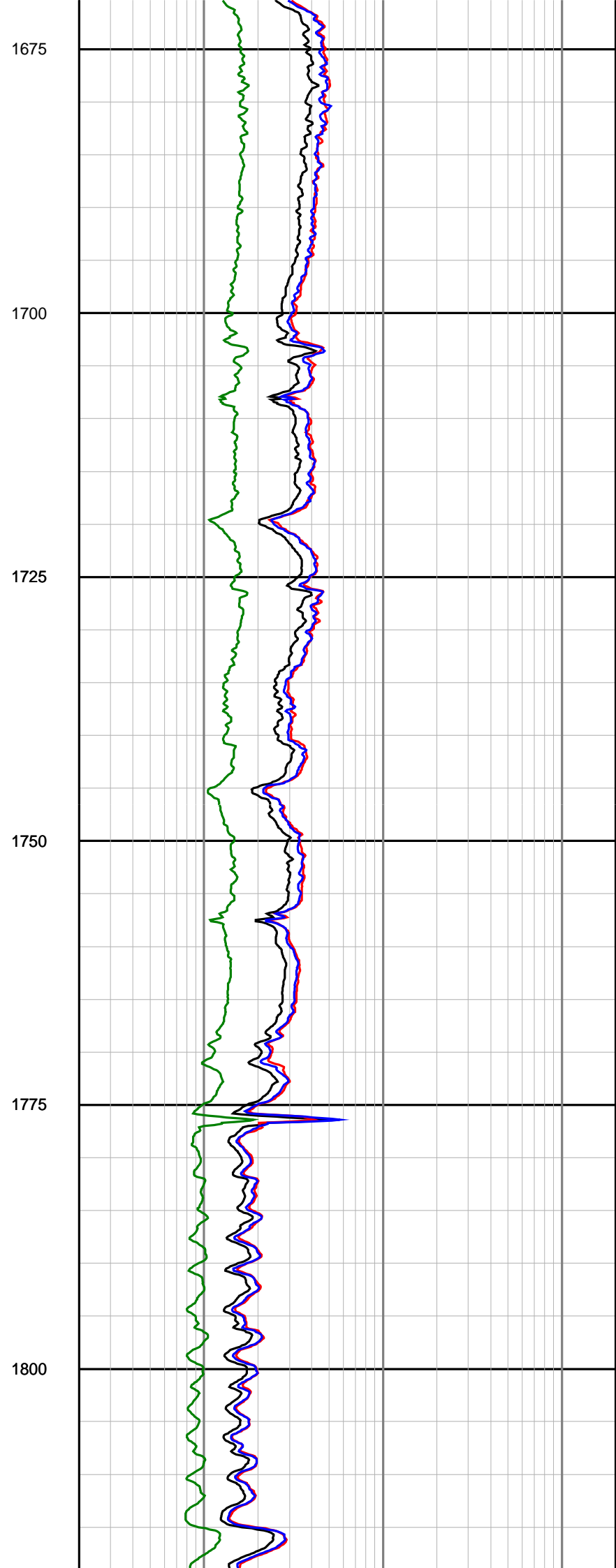
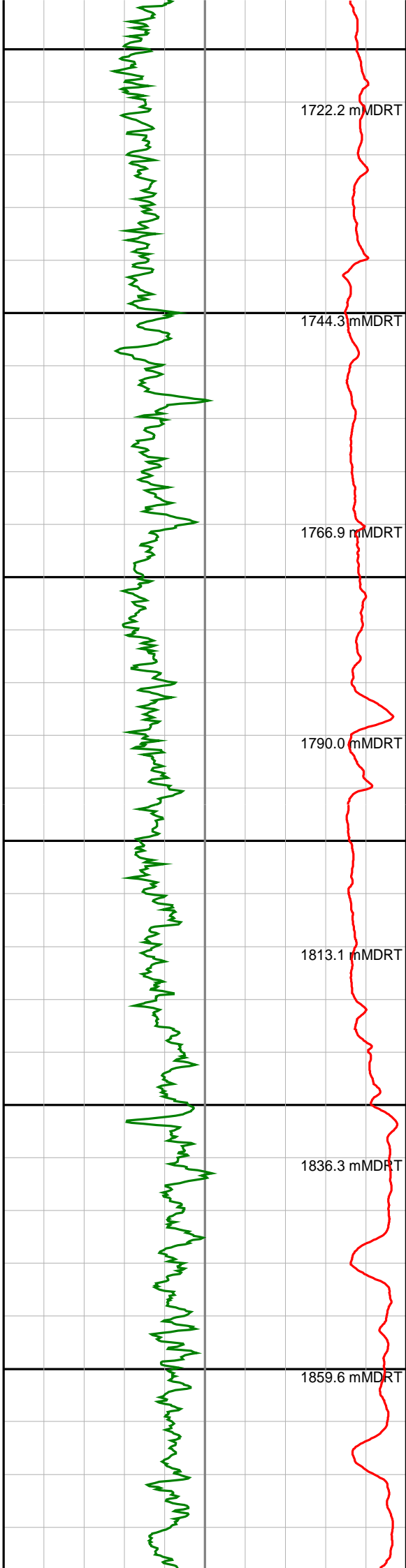
1325

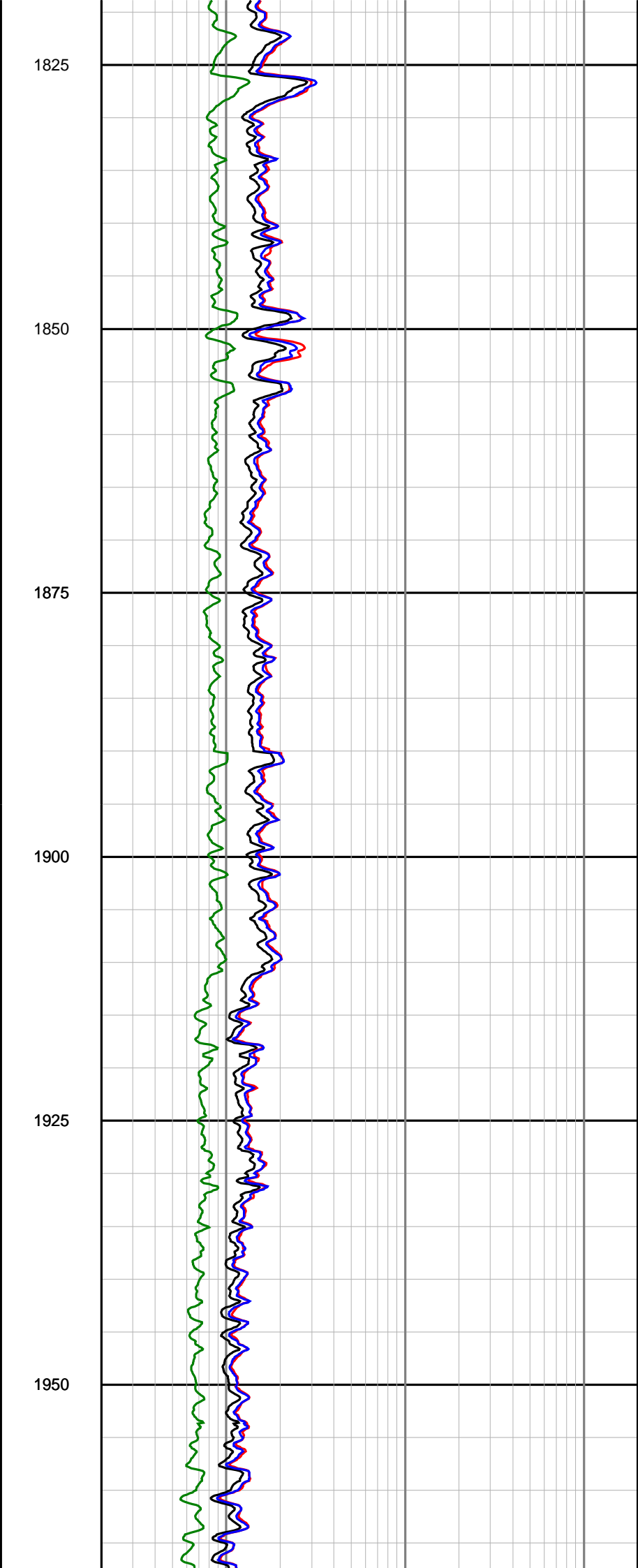
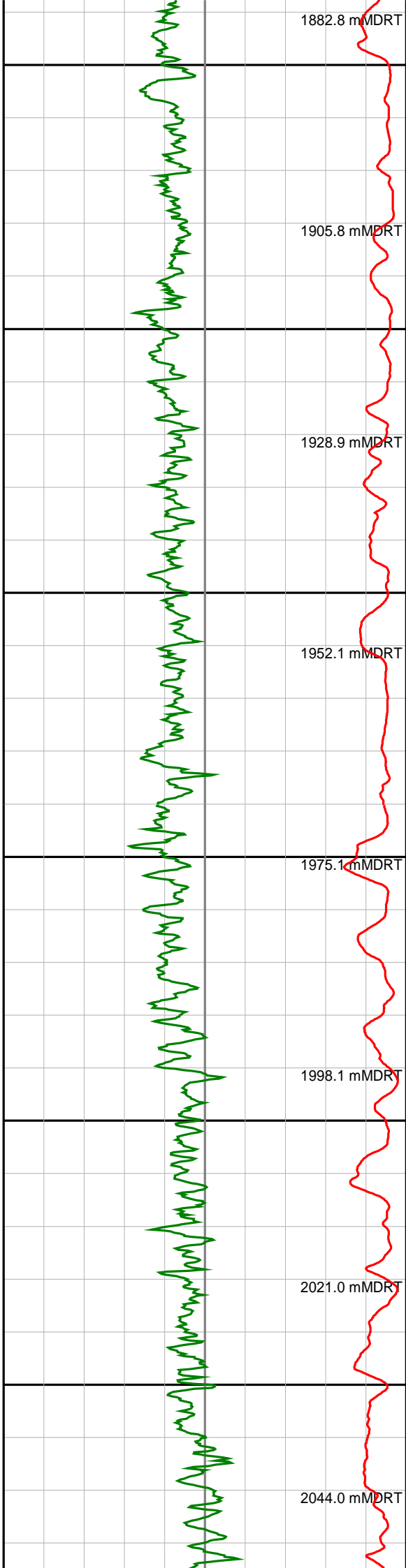
1350

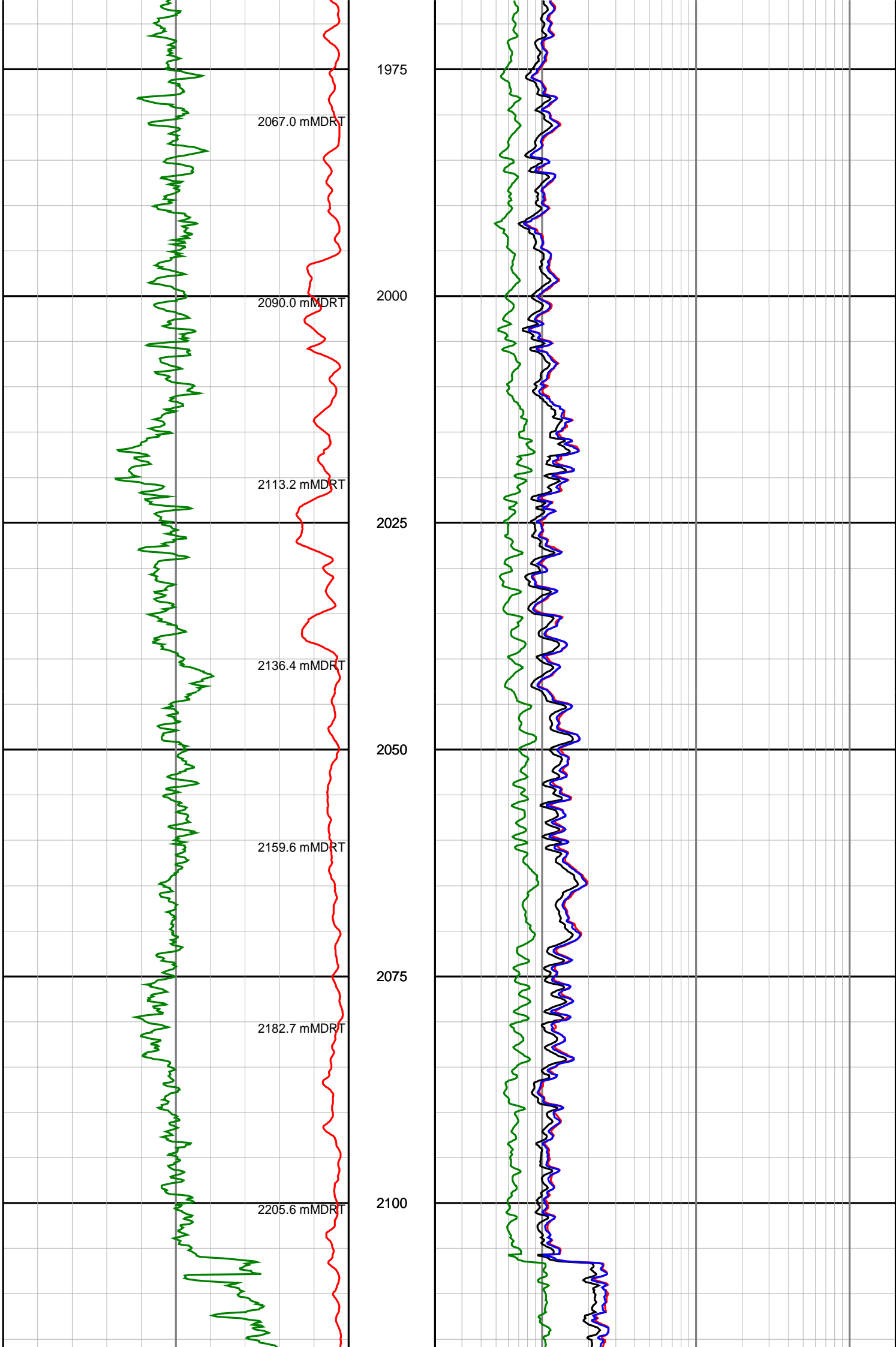


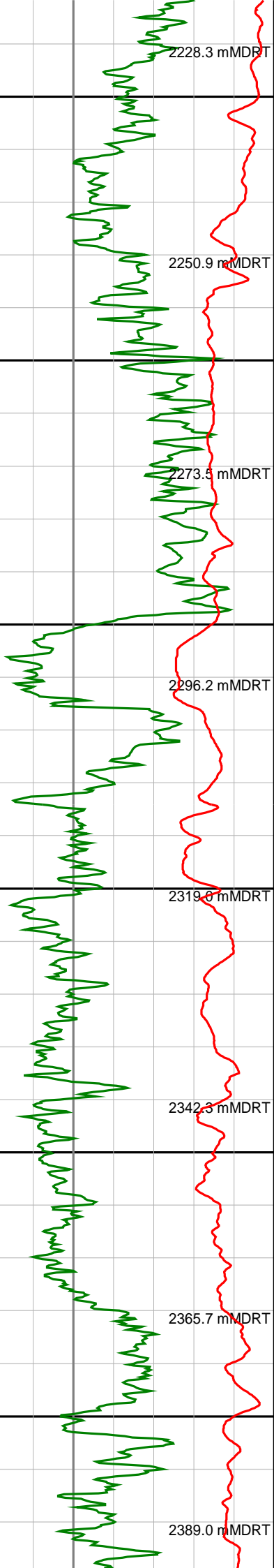












2125

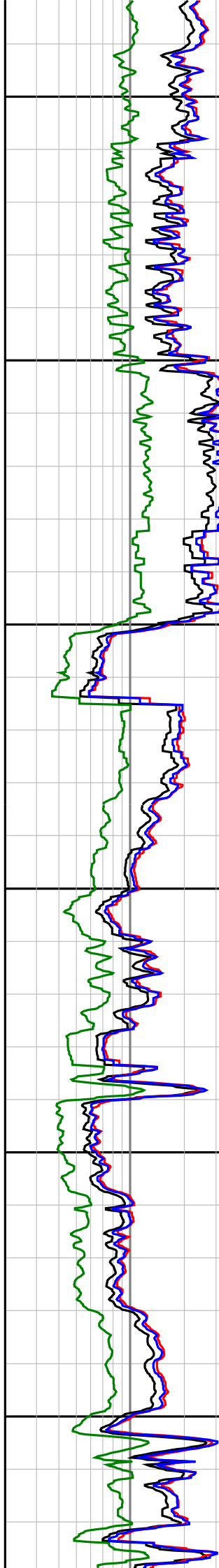
2150

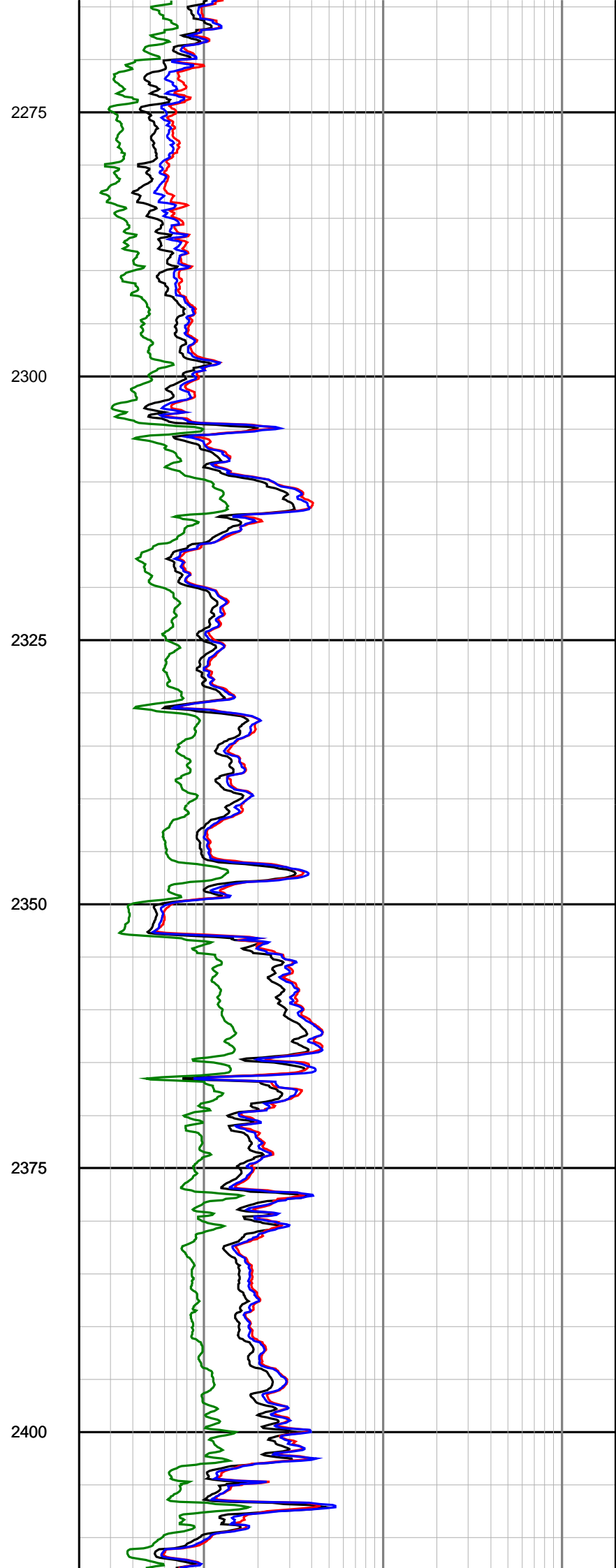
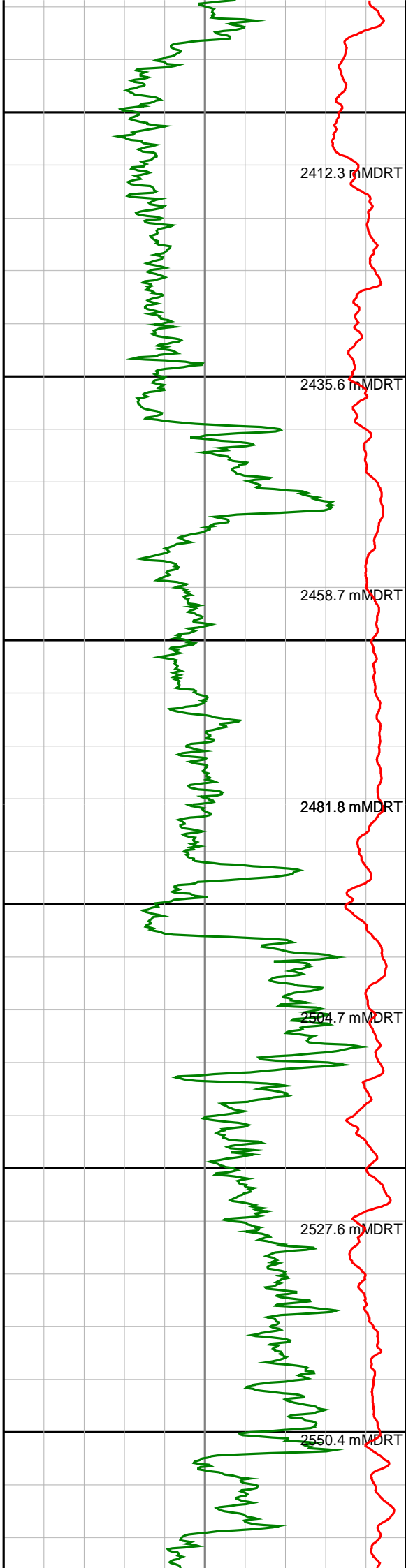
2175

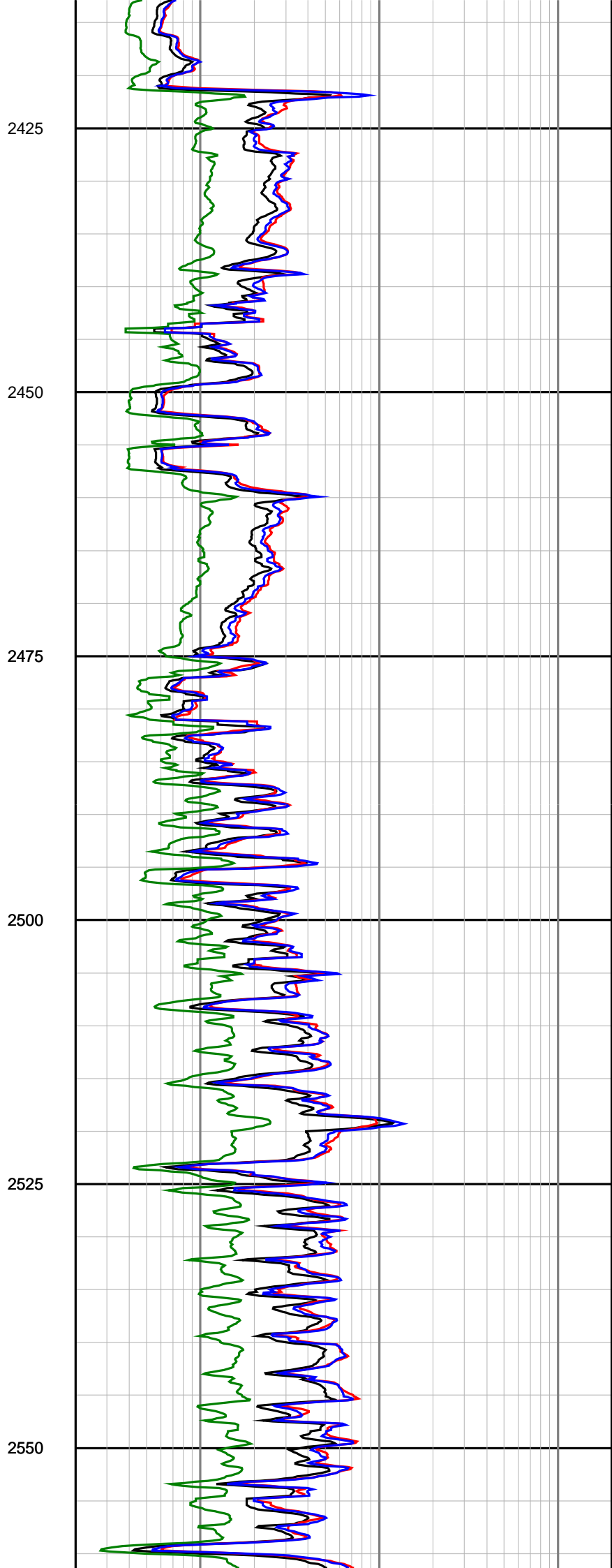
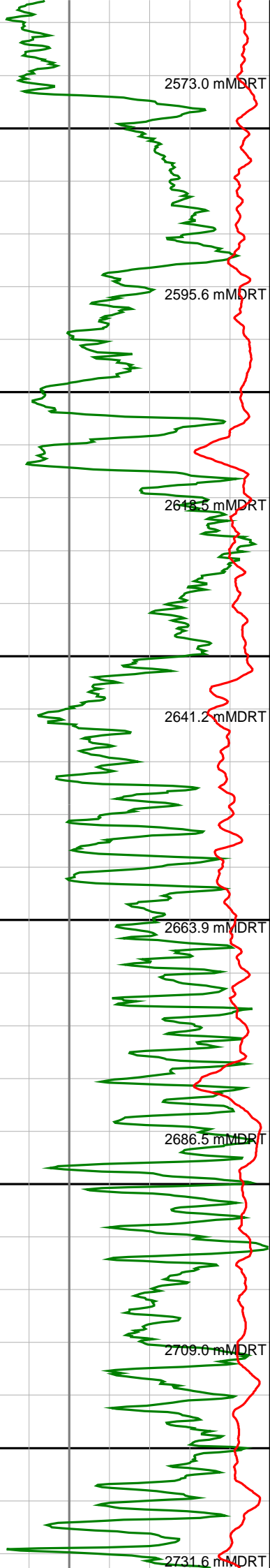
2200

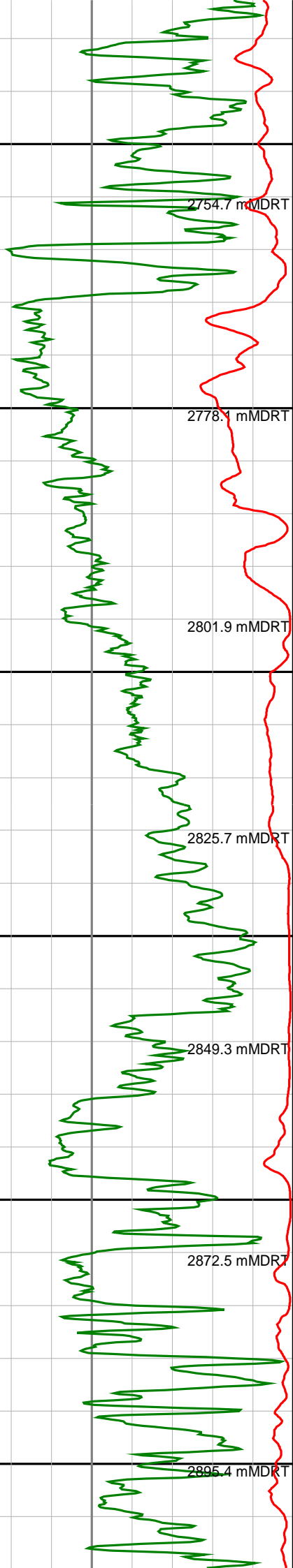
2225

2250









2575

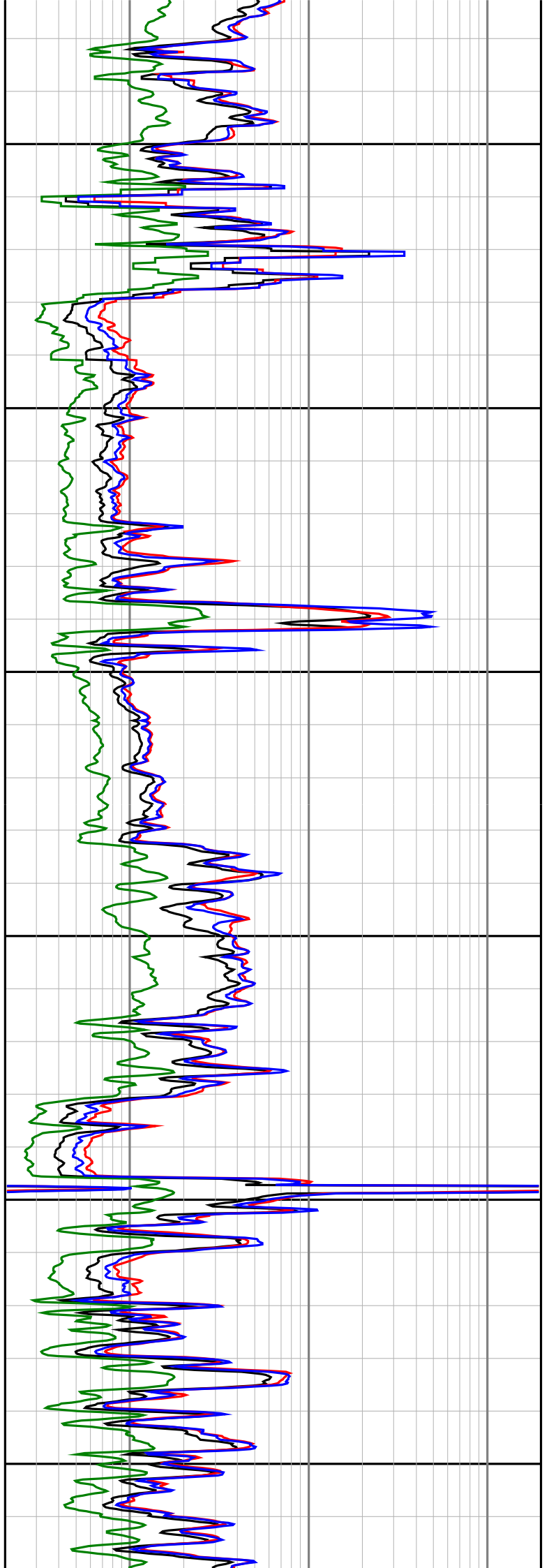
2600

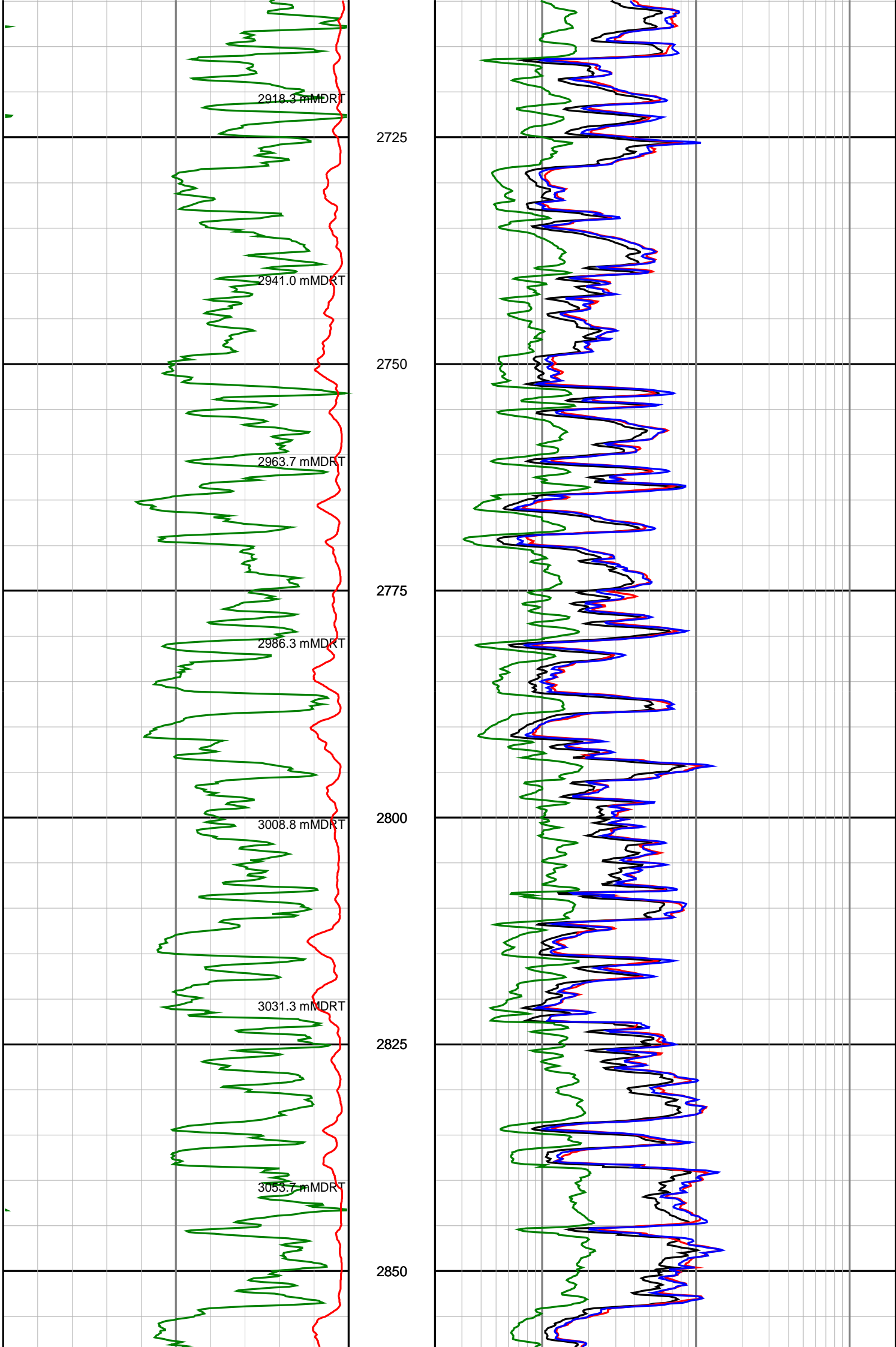
2625

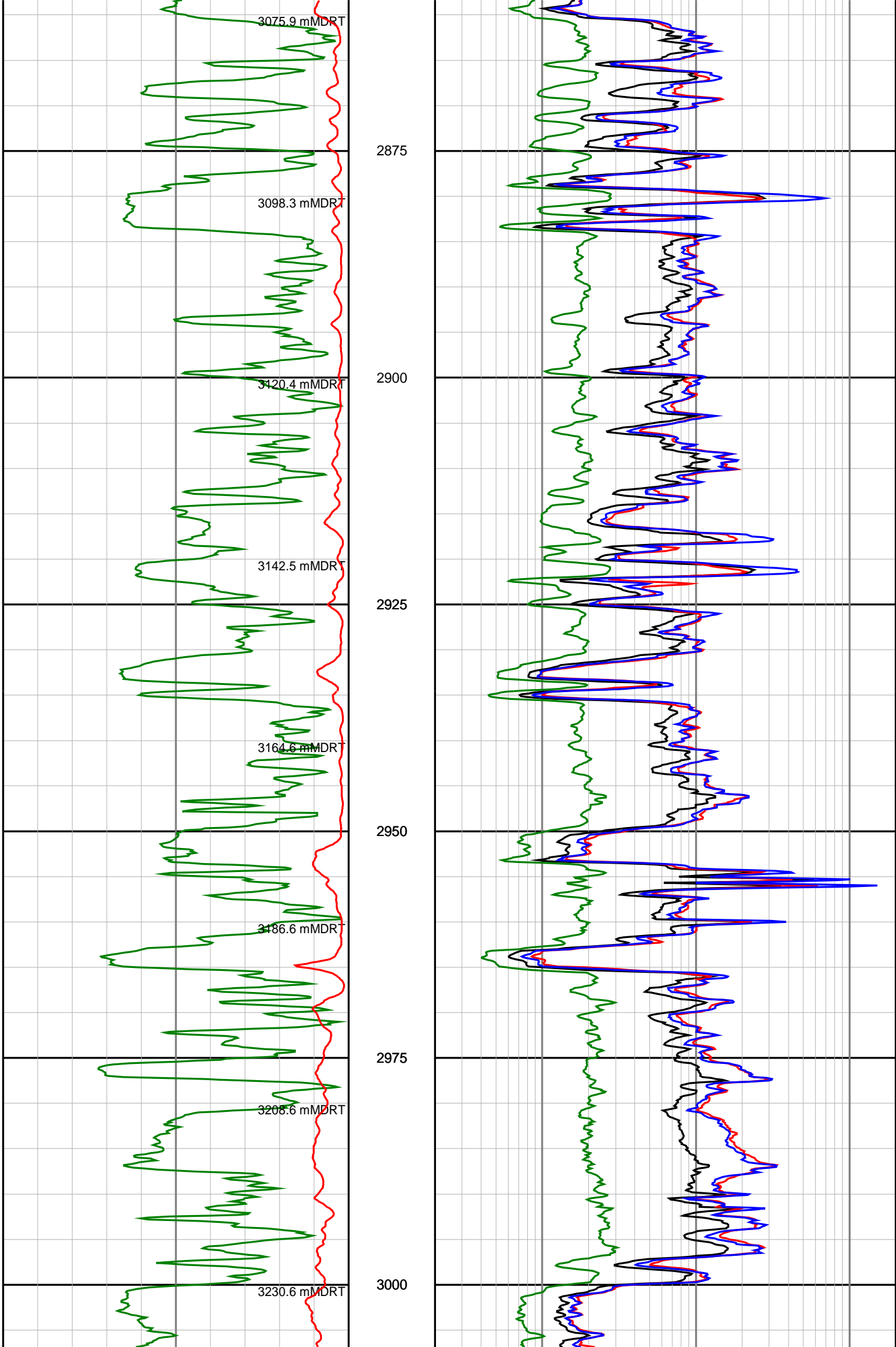
2650

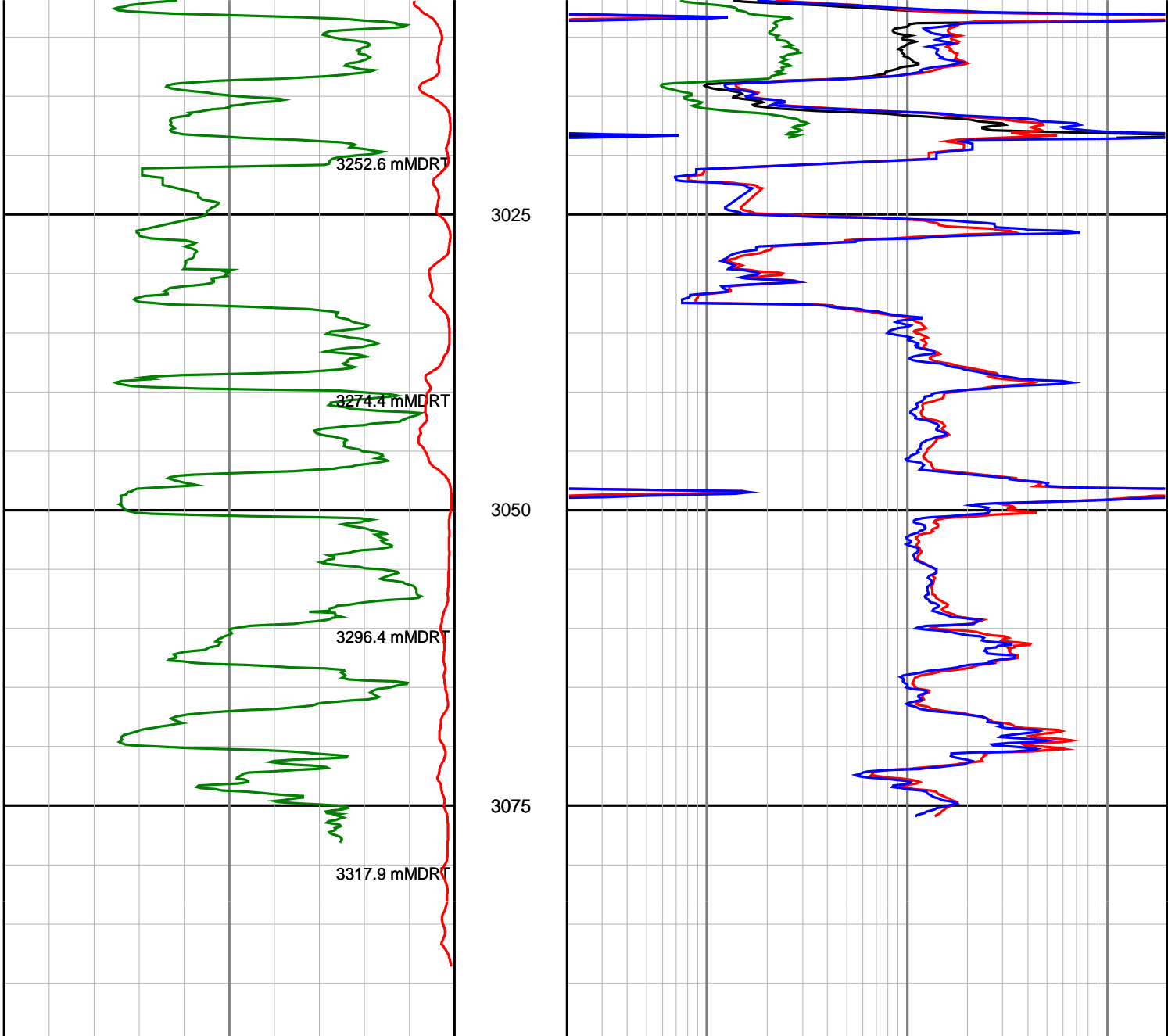
2675

2700









<p>Gamma Ray (SGRC) api</p> <p>0 200</p>	<p>Depth TVD 1:500</p>	<p>Ext Shallow Phase Res (SEXP) ohmm</p> <p>0.2 200</p>
<p>Rate Of Penetration (SROP) m/hr</p> <p>500 0</p>		<p>Shallow Phase Res (SESP) ohmm</p> <p>0.2 200</p>
		<p>Medium Phase Res (SEMP) ohmm</p> <p>0.2 200</p>
		<p>Deep Phase Res (SEDP) ohmm</p> <p>0.2 200</p>